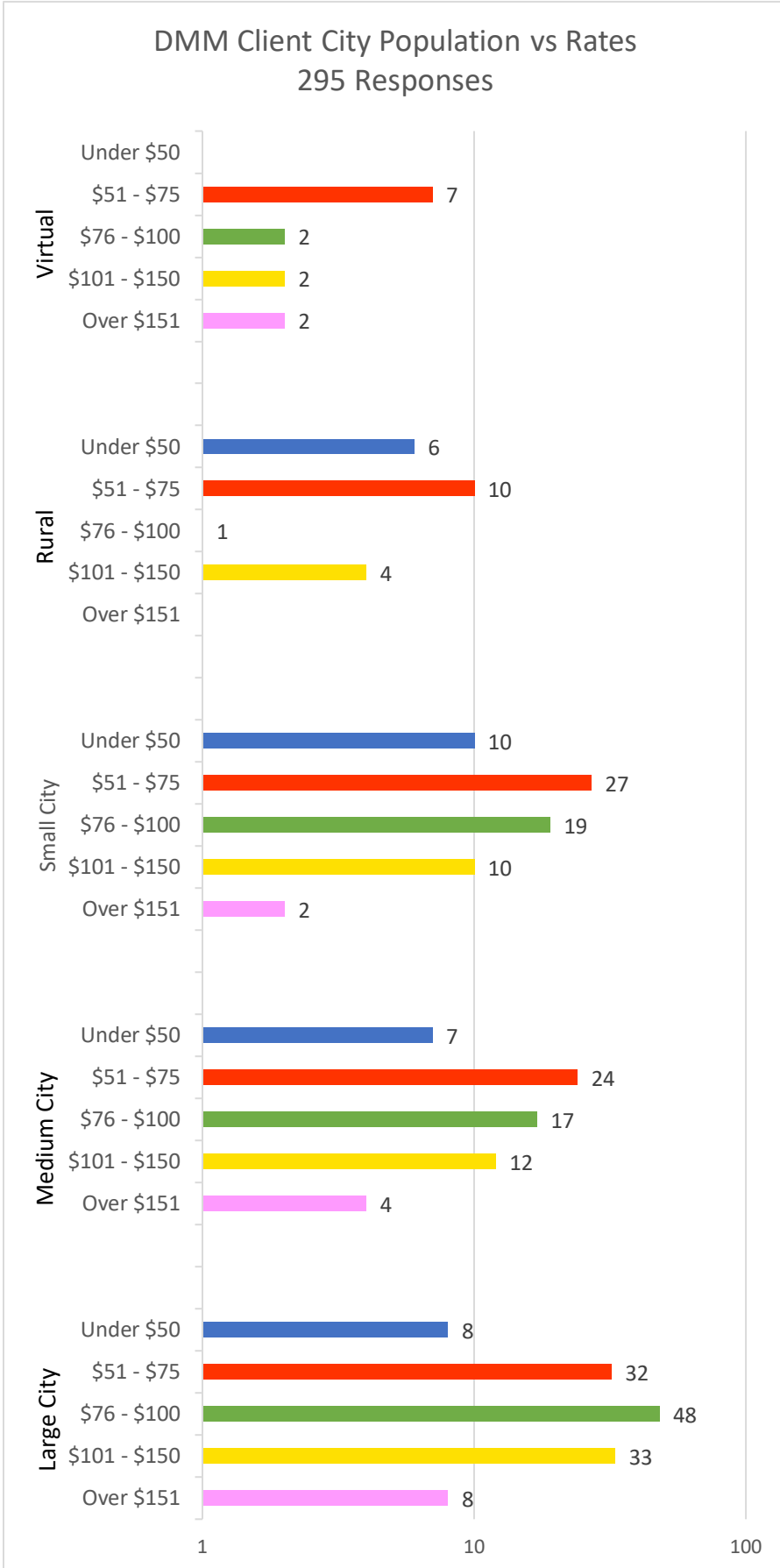


# Overall DMM Survey Responses



Virtual

Rates	Responses
Under \$50	0
\$51 - \$75	7
\$76 - \$100	2
\$101 - \$150	2
Over \$151	2

Rural

Rates	Responses
Under \$50	6
\$51 - \$75	10
\$76 - \$100	4
\$101 - \$150	1
Over \$151	0

Small City

Rates	Responses
Under \$50	10
\$51 - \$75	27
\$76 - \$100	19
\$101 - \$150	10
Over \$151	2

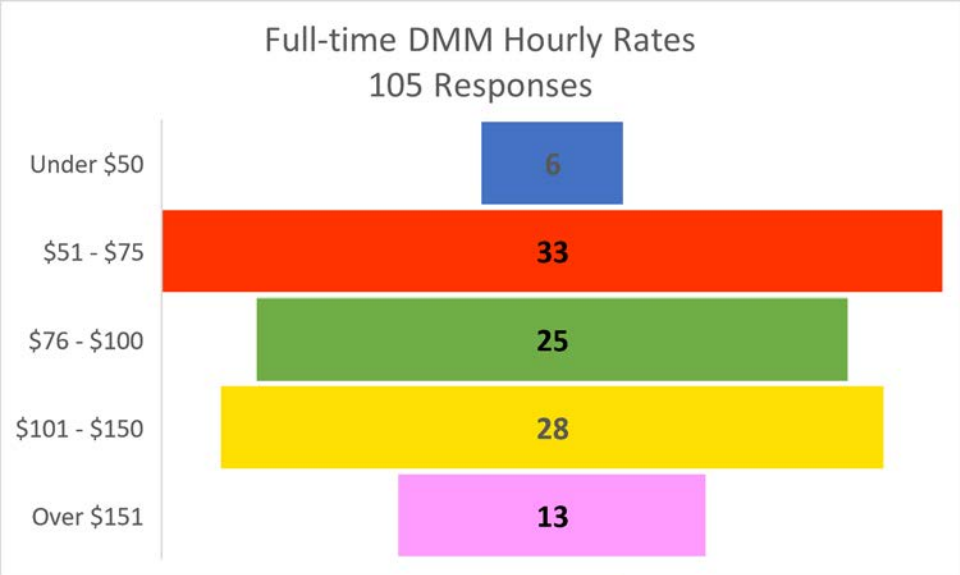
Medium City

Rates	Responses
Under \$50	7
\$51 - \$75	24
\$76 - \$100	17
\$101 - \$150	12
Over \$151	4

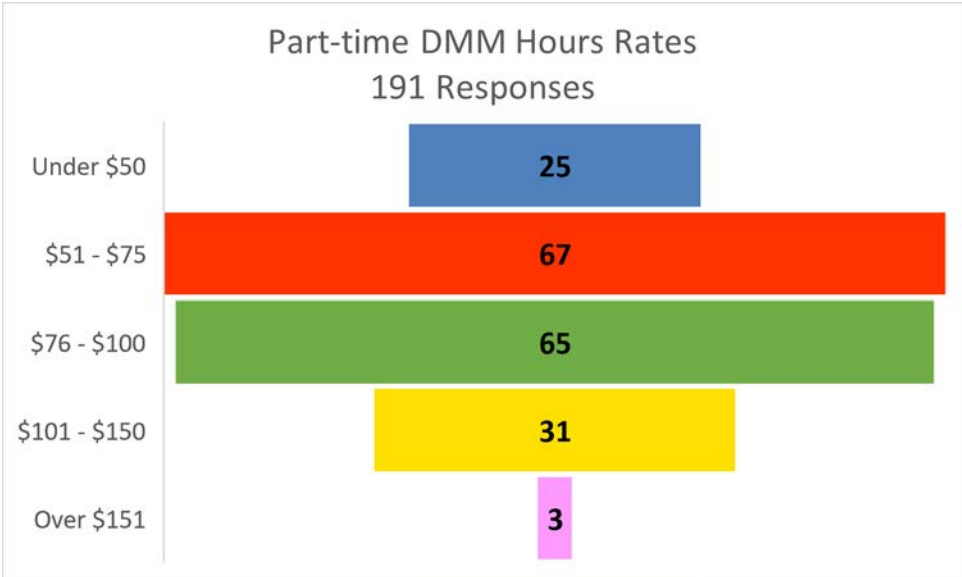
Large City

Rates	Responses
Under \$50	8
\$51 - \$75	32
\$76 - \$100	48
\$101 - \$150	33
Over \$151	8

# Overall DMM Survey Responses



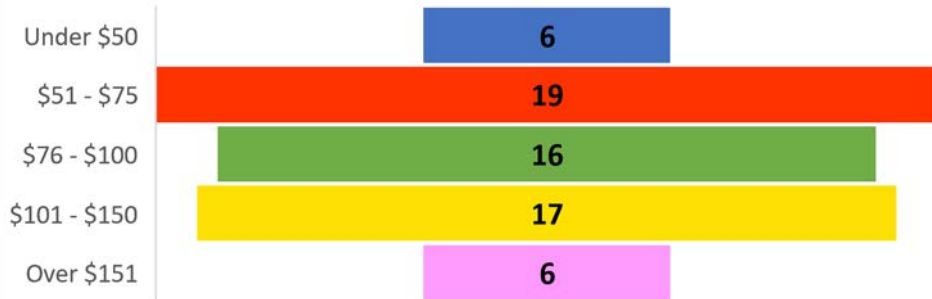
Full-Time Rates	Responses
Under \$50	6
\$51 - \$75	33
\$76 - \$100	25
\$101 - \$150	28
Over \$151	13



Part-Time Rates	Responses
Under \$50	25
\$51 - \$75	67
\$76 - \$100	65
\$101 - \$150	31
Over \$151	3

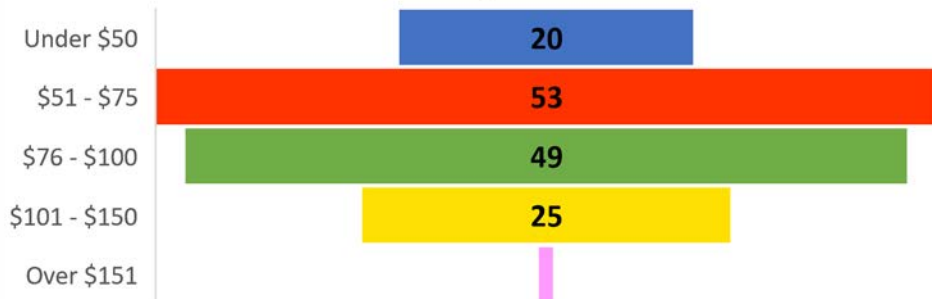
## Overall DMM Survey Responses

Onsite Full-Time Rates  
64 Responses



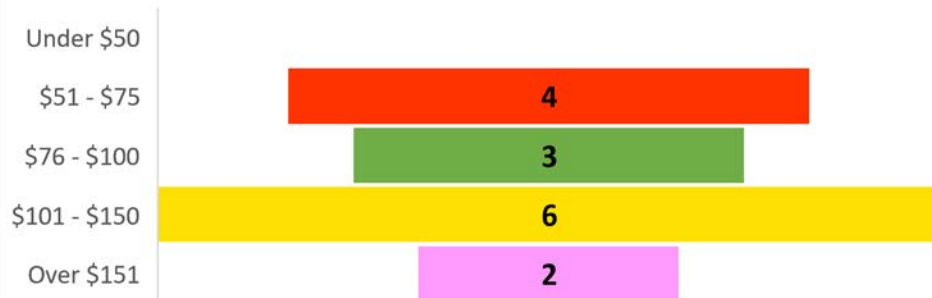
Onsite Full-Time Rates	Responses
Under \$50	6
\$51 - \$75	19
\$76 - \$100	16
\$101 - \$150	17
Over \$151	6

Onsite Part-Time Rates  
148 Responses



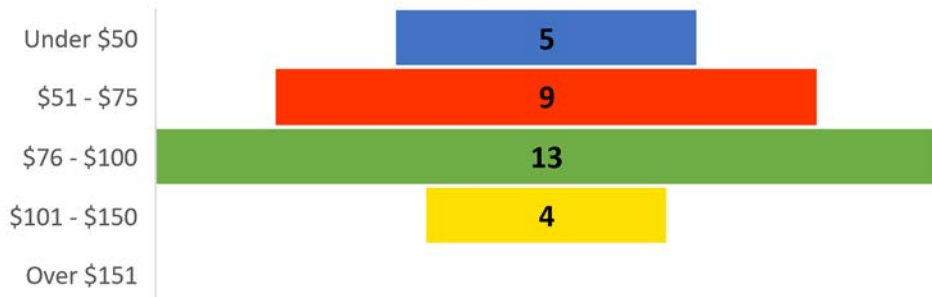
Onsite Part-Time Rates	Responses
Under \$50	20
\$51 - \$75	53
\$76 - \$100	49
\$101 - \$150	25
Over \$151	3

Virtual Full-Time Rates  
15 Responses



Virtual Full-Time Rates	Responses
Under \$50	0
\$51 - \$75	4
\$76 - \$100	3
\$101 - \$150	6
Over \$151	2

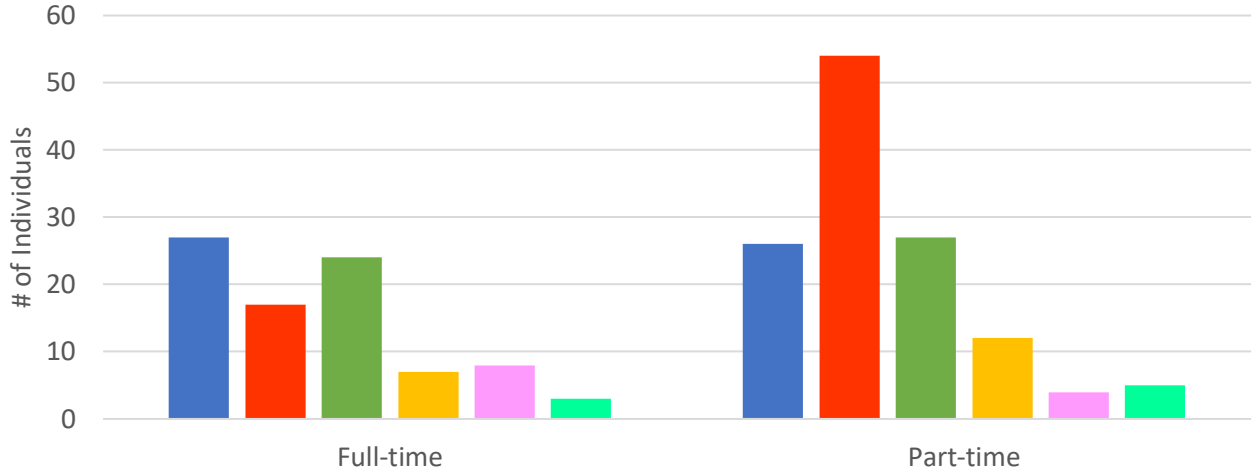
Virtual Part-Time Rates  
31 Responses



Virtual Part-Time Rates	Responses
Under \$50	5
\$51 - \$75	9
\$76 - \$100	13
\$101 - \$150	4
Over \$151	0

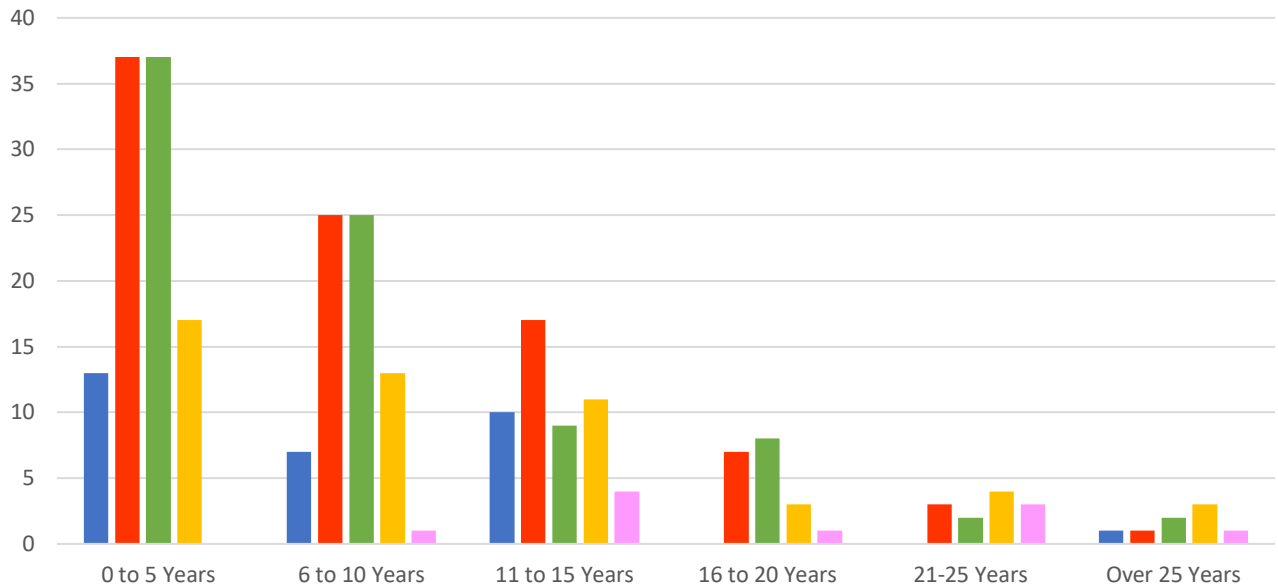
# Overall DMM Survey Responses

## Employment Level vs Years of Service - 214 Responses



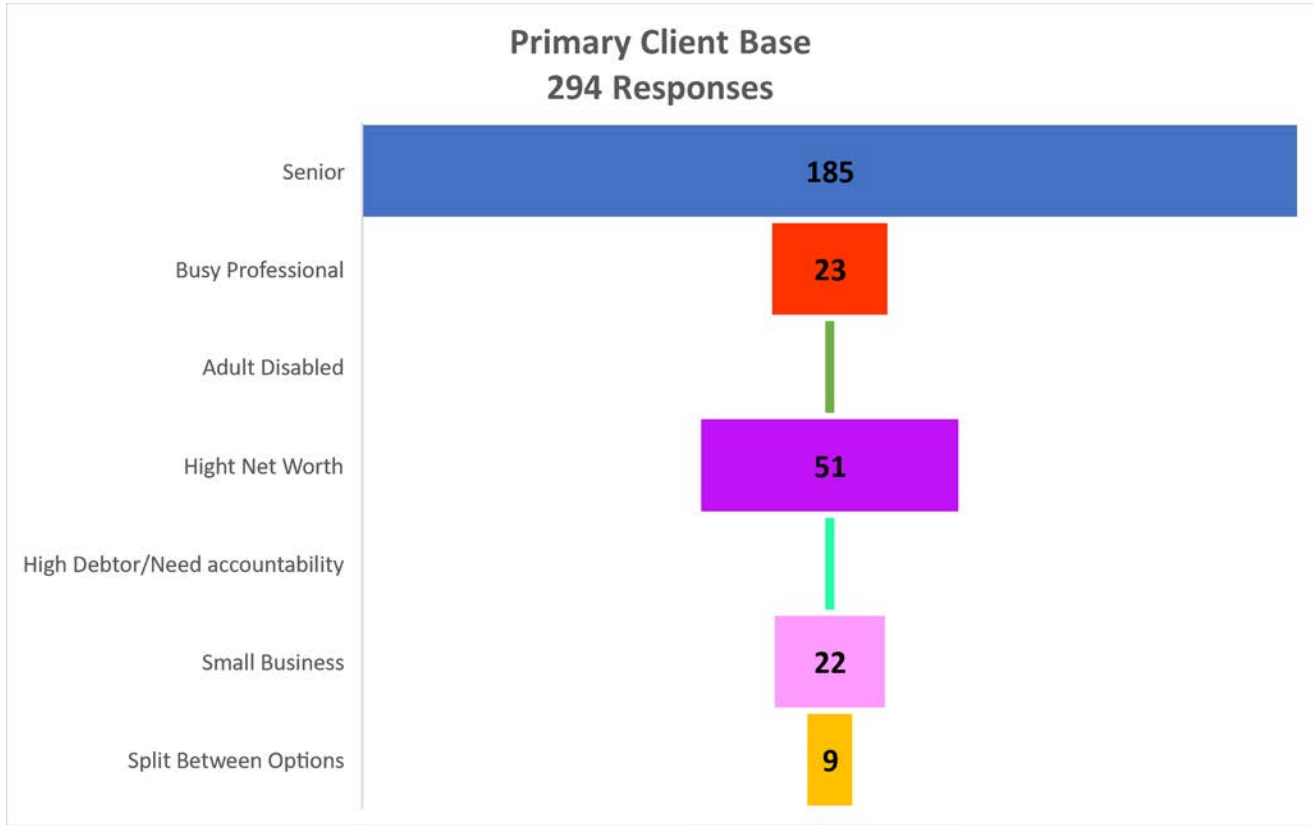
	0 to 5 Years	6 to 10 Years	11 to 15 Years	16 to 20 Years	21-25 Years	Over 25 Years
<b>Full-time</b>	27	17	24	7	8	3
<b>Part-time</b>	26	54	27	12	4	5

## Rates Vs Years of Service - 265 Responses



	0 to 5 Years	6 to 10 Years	11 to 15 Years	16 to 20 Years	21-25 Years	Over 25 Years
<b>Under \$50</b>	13	7	10	0	0	1
<b>\$51 - \$75</b>	37	25	17	7	3	1
<b>\$76 - \$100</b>	37	25	9	8	2	2
<b>\$101 - \$150</b>	17	13	11	3	4	3
<b>Over \$151</b>	0	1	4	1	3	1

# Overall DMM Survey Responses



Primary Client Base	Responses
Senior	185
Busy Professional	23
Adult Disabled	2
Hight Net Worth	51
High Debtor/Need accountability	2
Small Business	22
Split Between Options	9